



# W830NB

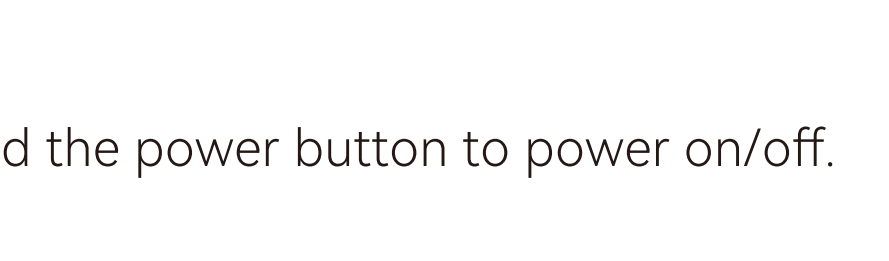
Wireless Over-Ear Headphones with Active Noise Cancellation

Model: EDF200163

## Manual

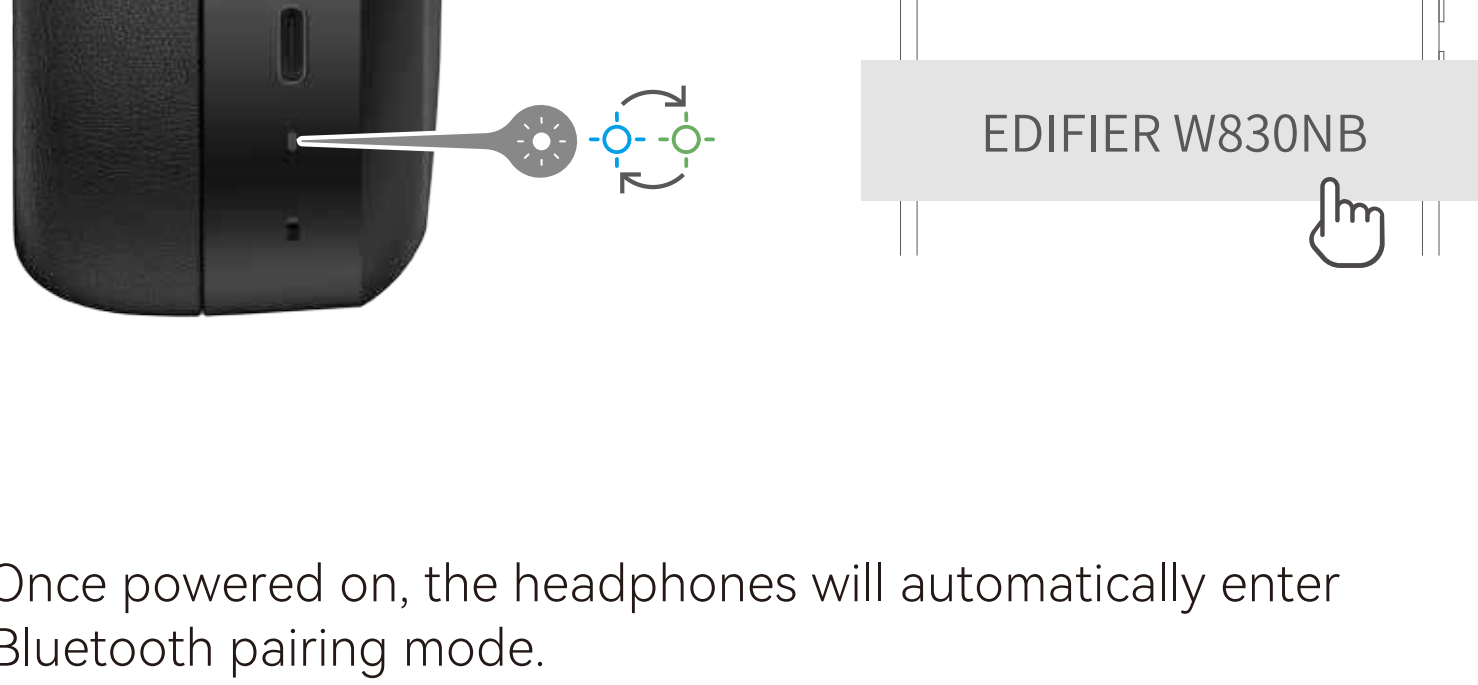


### EN 1. Power ON/OFF



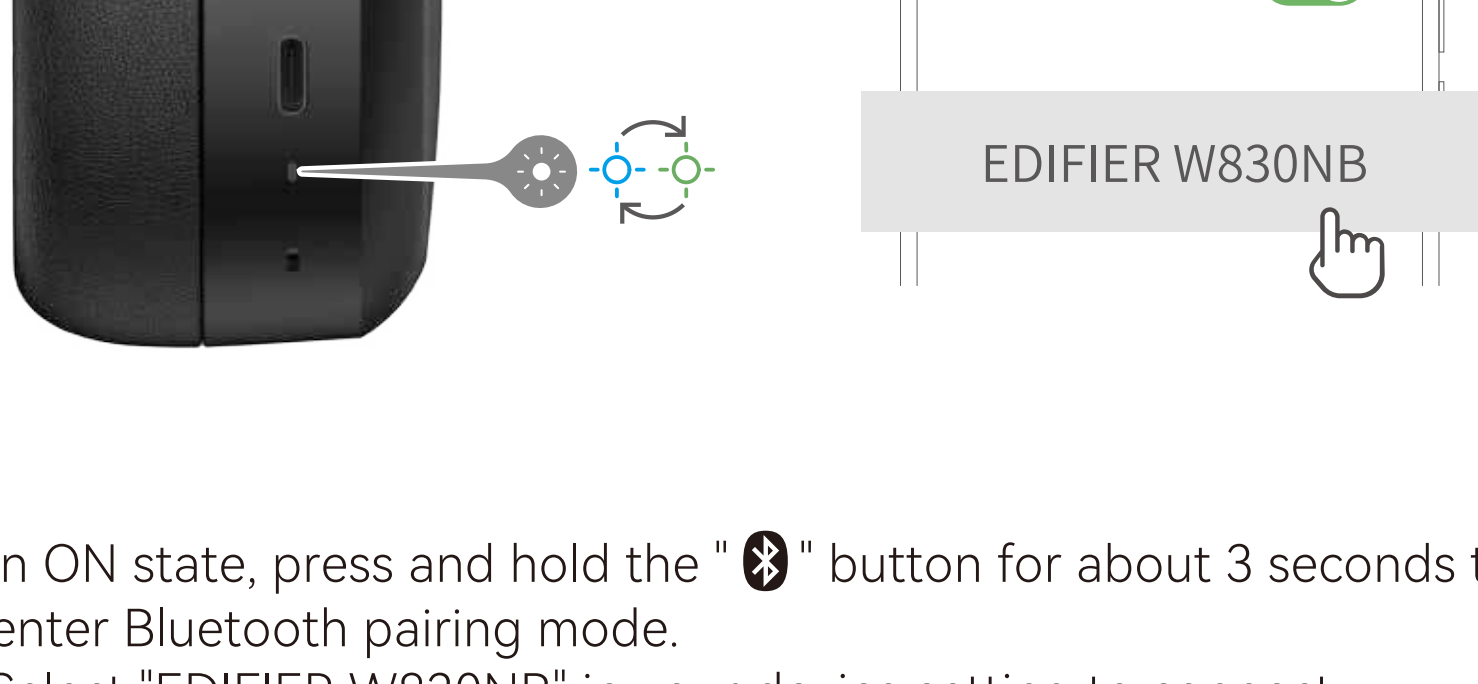
Press and hold the power button to power on/off.

### 2. First pairing



1. Once powered on, the headphones will automatically enter Bluetooth pairing mode.
2. Select "EDIFIER W830NB" in your device setting to connect.

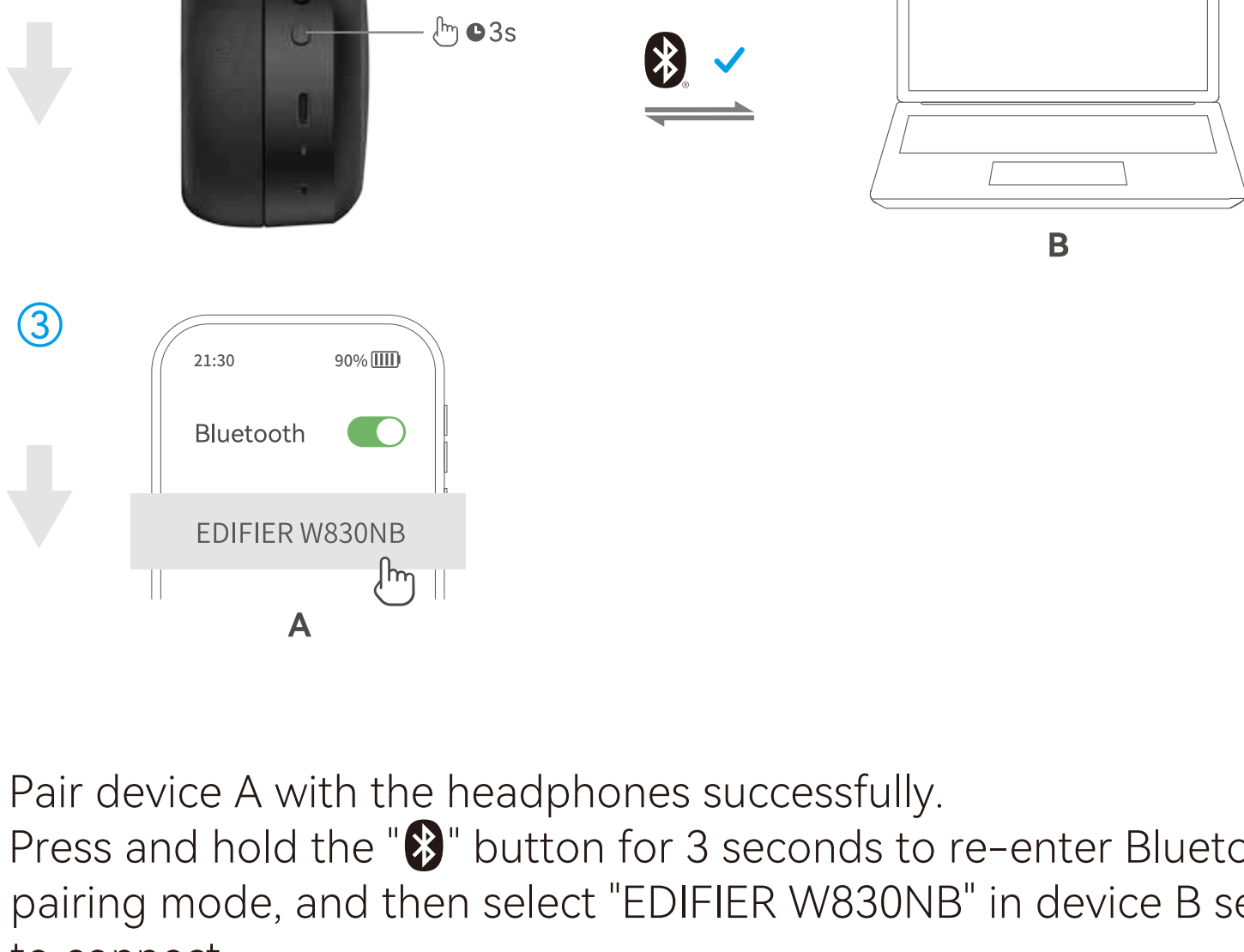
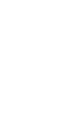
### 3. Pairing for new device



1. In ON state, press and hold the "Bluetooth" button for about 3 seconds to enter Bluetooth pairing mode.
2. Select "EDIFIER W830NB" in your device setting to connect.

Note: For subsequent use, the headphones will automatically connect to the device used last time.

### 4. Dual-device connection

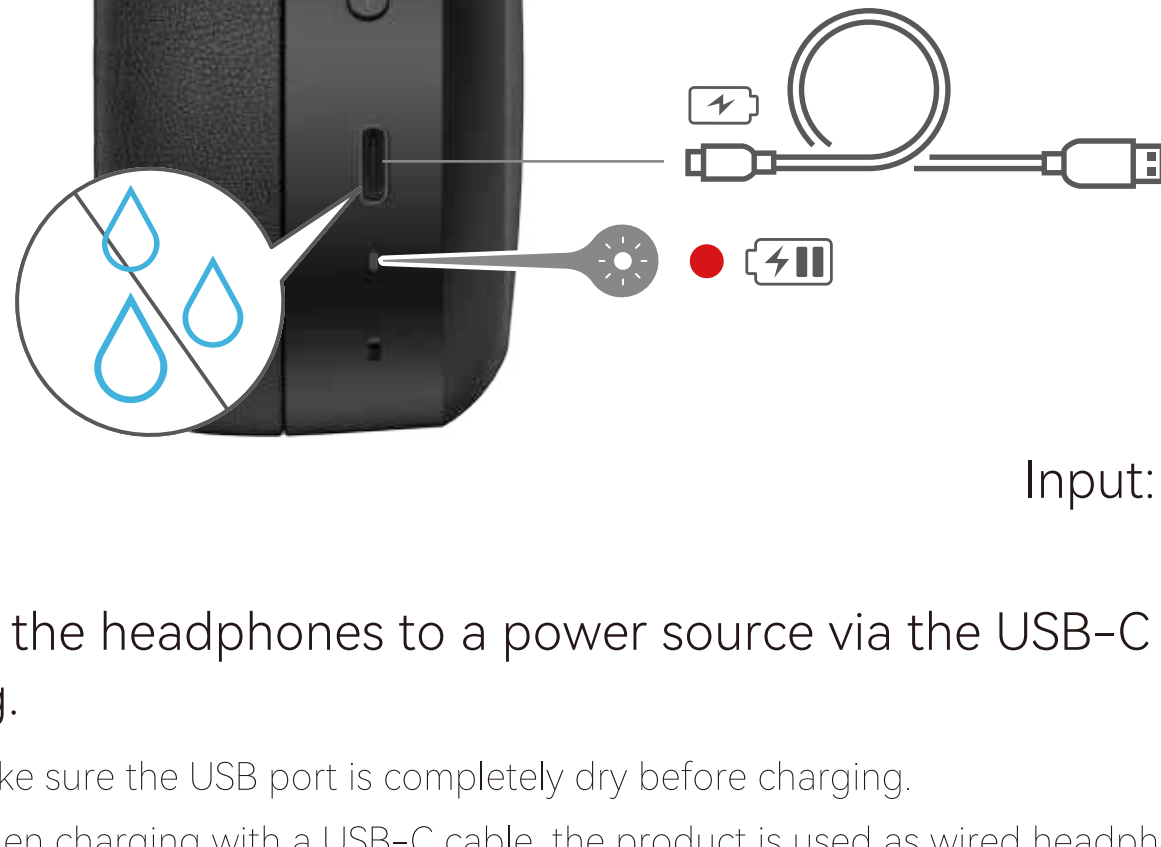


1. Pair device A with the headphones successfully.
2. Press and hold the "Bluetooth" button for 3 seconds to re-enter Bluetooth pairing mode, and then select "EDIFIER W830NB" in device B setting to connect.
3. Select "EDIFIER W830NB" again in device A setting to connect, and the dual-device connection is done.

Note: 1. Dual-device connection is disabled by default. Enable this function via the app.

2. For subsequent use, the headphones will automatically reconnect to the two devices used last time.

### 5. Charging



Connect the headphones to a power source via the USB-C cable for charging.

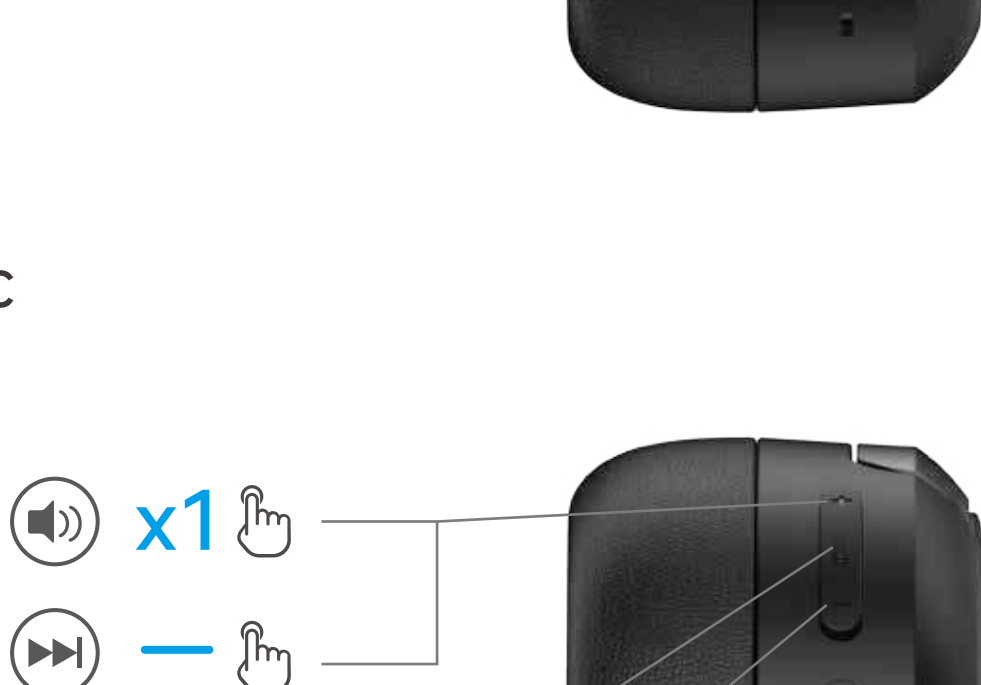
Note: 1. Make sure the USB port is completely dry before charging.

2. When charging with a USB-C cable, the product is used as wired headphones and Bluetooth functions are unavailable.

### 6. Controls



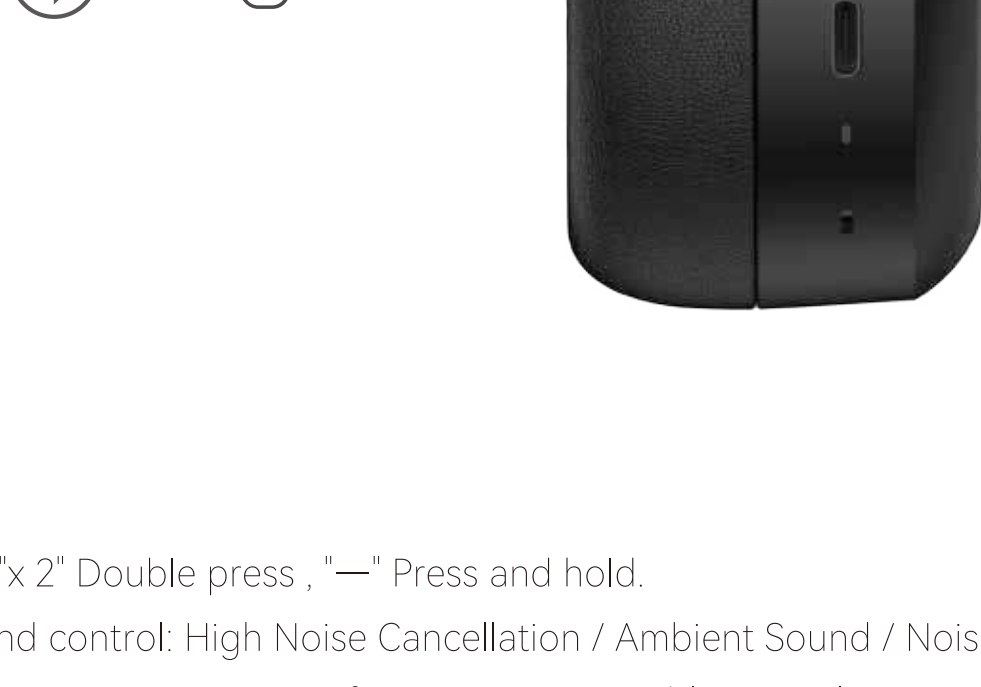
#### • Call



#### • Music



#### • Mode



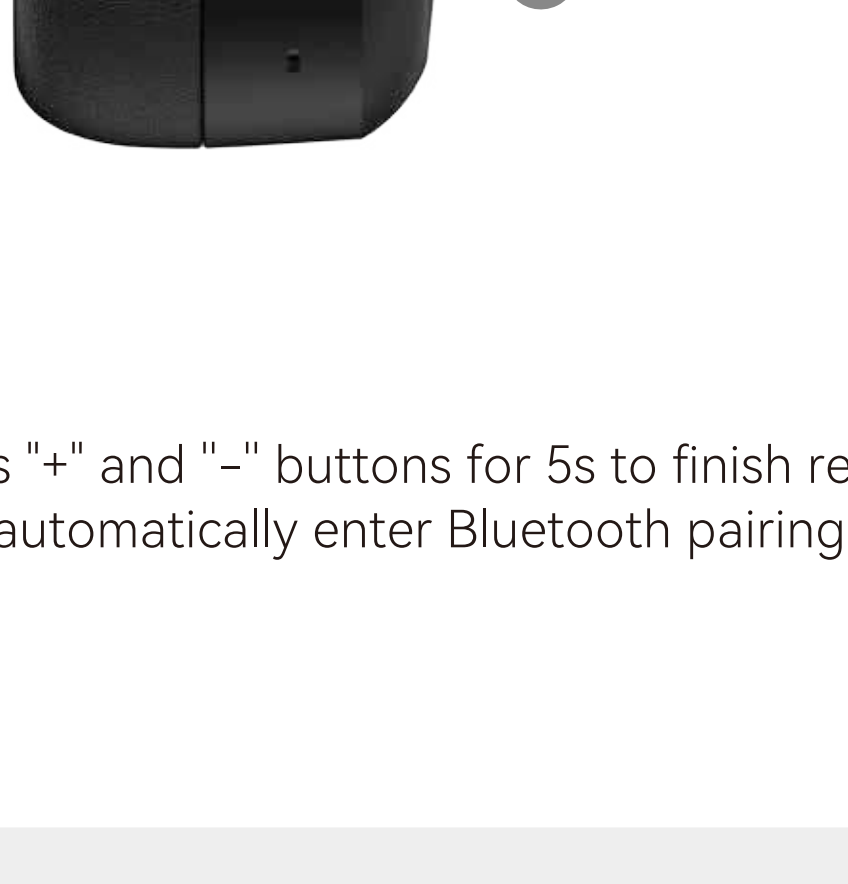
Note:

1. "x 1" Press, "x 2" Double press, "-" Press and hold.

2. Default sound control: High Noise Cancellation / Ambient Sound / Noise Cancellation Off.

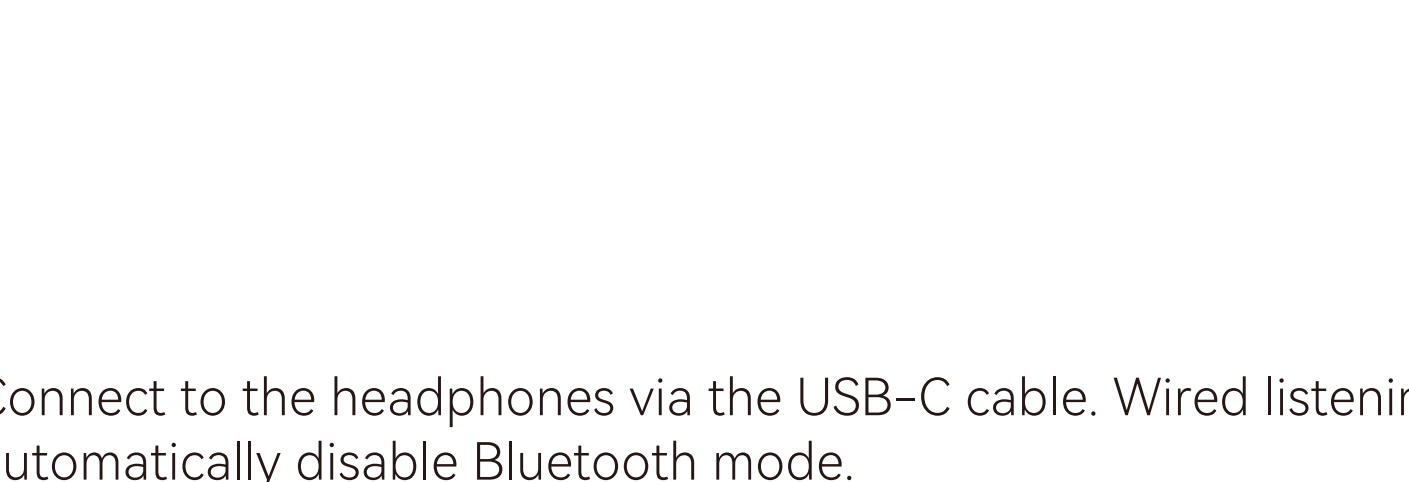
3. Download EDIFIER ConneX App for more customizable control settings.

### 7. Reset



In ON state, press "+" and "-" buttons for 5s to finish reset, then headphones will automatically enter Bluetooth pairing mode if successful.

### 8. Wired listening



Connect to the headphones via the USB-C cable. Wired listening will automatically disable Bluetooth mode.